

# Nele Learning Centre for Learning and Development

Address: 'Anugraha' 1444, 4th Cross, 6th Main, 5th Stage, BEML Layout, RR Nagar, Bengaluru, Karnataka 560098

**BELIEVE IN YOURSELF**

## Our Mission

At Nele, we believe that every child is born with their own unique potential. However, due to various barriers in their environment both at home and school, in some circumstances the child is not able to realise their potential, sometimes until later in life.

At Nele, we strive to maintain a healthy balance between the child's environment and help them realise their own unique potential. With a team of highly specialised teachers, we provide the adequate support, skills and assistance to the child to continue on their journey.

We partner with the significant people in the child's life in creating an inclusive community for the child to thrive in.



## About us

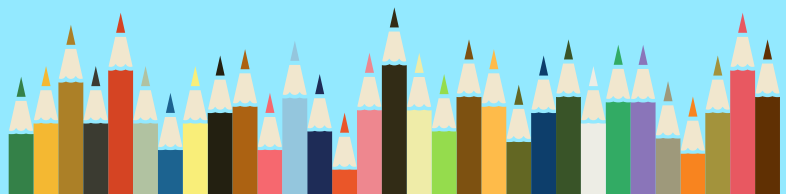
If a child can't learn the way we teach, maybe we should teach the way they learn".

With the sole intent of aiding children with special needs, Nele was started in 2011 by a group of determined special educators. With a base in Rajarajeshwari Nagar, Bangalore, we have been providing services for over a decade.

Nele in Kannada means Niche or to be rooted.

Our mission is to provide early intervention among kids and provide them with coping strategies along with skills to help them in the long run.

With more than 200 kids helped, and multiple training sessions conducted for both kids and teachers in private and special schools, we've been on a fruitful journey.





## Our Programs

---

Early Intervention

School Readiness Programme

Remedial Education

Pre Vocational Skill Development

Teacher Training Programme

Life Skills programme for  
Children

## Our Services

---

Coaching students for CBSE,  
ICSE, State and NIOS curriculum

Speech Therapy

Occupational Therapy

Music Therapy

Inclusive Art Class

## Our Vision

---

- To support children with special educational needs
- To equip parents, schools and teachers with knowledge of the specific needs
- To create awareness about inclusive practices by recognizing the child's inherent potential
- To facilitate holistic development of the child by partnering with significant people in the child's life
- To make the service available and affordable to each and every child in need

